

**CCR COMPLIANCE
GROUNDWATER MONITORING AND CORRECTIVE ACTION
ANNUAL REPORT
BOTTOM ASH PONDS AND ASH DISPOSAL SITE**

Prepared for:



GenOn Power Midwest LP
Cheswick Generating Station
Springdale, Pennsylvania

Prepared by:



Aptim Environmental & Infrastructure, LLC
Pittsburgh, Pennsylvania

January 2020

Table of Contents

List of Tables iii

List of Figures iii

1.0 Introduction 1

2.0 Bottom Ash Ponds 3

 2.1 Groundwater Monitoring Network 3

 2.2 2019 Data Collection 3

 2.3 2019 Monitoring Program Transitions..... 3

 2.4 2019 Corrective Actions 3

 2.5 2020 Projected Activities 3

3.0 Ash Disposal Site..... 4

 3.1 Groundwater Monitoring Network 4

 3.2 2019 Data Collection 4

 3.3 2019 Monitoring Program Transitions..... 4

 3.4 2019 Corrective Actions 4

 3.5 2020 Projected Activities 4

Tables

Figures

List of Tables

Table 1	Bottom Ash Ponds Groundwater Analytical Data Summary—Appendix III Constituents
Table 2	Bottom Ash Ponds Groundwater Analytical Data Summary—Appendix IV Constituents
Table 3	Ash Disposal Site Groundwater Analytical Data Summary—Appendix III Constituents
Table 4	Ash Disposal Site Groundwater Analytical Data Summary—Appendix IV Constituents

List of Figures

Figure 1	Bottom Ash Ponds—Location and Groundwater Monitoring System Map
Figure 2	Ash Disposal Site—Location and Groundwater Monitoring System Map

1.0 Introduction

Title 40 Code of Federal Regulations (CFR) §257.90 mandates that existing Coal Combustion Residuals (CCR) landfills and surface impoundments, also known as CCR units, be subject to groundwater monitoring and corrective action requirements as further detailed in §257.91 through §257.98. These requirements are part of the overall CCR Rule (or Rule) which was published in the Federal Register on April 17, 2015 and which became effective on October 19, 2015. Specific obligations for Owners and Operators of existing CCR units regarding the preparation of “Annual Groundwater Monitoring and Corrective Action Reports (Annual Report)” are outlined in §257.90(e)(1-5). The first of these Annual Reports was completed no later than January 31, 2018, and provided information to address the following aspects for the preceding calendar year:

- Document the status of the groundwater monitoring and corrective action program for the respective CCR units;
- Summarize key actions completed;
- Describe any problems encountered and actions taken to resolve the problems; and
- Offer a projection of key activities for the upcoming year.

At a minimum, the Annual Report must contain the following information to the extent applicable and available:

- A map, aerial image, or diagram showing the CCR unit and all background/upgradient and downgradient monitoring wells, to include the well identification numbers, that are part of the groundwater monitoring program;
- Identification of any monitoring wells that were installed or decommissioned during the preceding year, along with a narrative description of why those actions were taken;
- In addition to all the monitoring data obtained under §257.90 through §257.98, a summary including the number of groundwater samples that were collected for analysis for each background/upgradient and downgradient well, the dates the samples were collected, and whether the sample was required by the detection monitoring or assessment monitoring programs;
- A narrative discussion of any transition between monitoring programs (e.g., the date and circumstances for transitioning from detection monitoring to assessment monitoring in addition to identifying the constituent(s) detected at a statistically significant increase over background levels); and
- Any other information required to be included as specified in §257.90 through §257.98.

The Cheswick Generating Station, operated by GenOn Power Midwest LP, a subsidiary of GenOn Holdings, Inc. (GenOn), is a coal-fired power plant located in Springdale, Pennsylvania. The Rule applies to this facility due to the management/disposal of CCR materials that are generated from the combustion of coal. CCR units associated with station operations include the Cheswick Ash Disposal Site and two bottom ash ponds, identified as the “Recycle Pond” and the “Emergency Pond.” Each of these CCR units has a dedicated groundwater monitoring system that was originally installed to comply with Commonwealth of Pennsylvania Residual Waste Regulations, and was subsequently evaluated and modified (as needed) for use under the CCR program. Additionally, in accordance with the provisions of §257.91(d) of the Rule, the groundwater monitoring system for the Bottom Ash Ponds has been designated to provide coverage in the context of a multiunit system encompassing both ponds collectively.

In summary, this third Annual Report has been prepared to comply with the requirements of §257.90(e), addressing each of the Cheswick Station’s CCR Units with respect to the groundwater monitoring and corrective actions undertaken during Calendar Year 2019. This Annual Report and all subsequent reports thereto will be placed in the Station’s operating record per §257.105(h)(1), noticed to the State Director per §257.106(h)(1), and posted to the publicly accessible internet site per §257.107(h)(1).

2.0 Bottom Ash Ponds

2.1 Groundwater Monitoring Network

The CCR groundwater monitoring system for the Bottom Ash Ponds is comprised of four wells, including Well MW-8 (upgradient), and Wells MW-9, MW-10, and MW-11 (downgradient). All four wells communicate with the alluvium, which is the uppermost aquifer. The locations of the wells are shown on the attached Figure 1, along with depiction of the generalized groundwater flow direction in the area of the ponds. Each of these wells was already existing, and no new wells were added nor were any existing wells abandoned/replaced during the 2019 reporting period.

2.2 2019 Data Collection

Following their transition in early-2018, the Bottom Ash Ponds continued in the CCR Assessment Monitoring Program during the 2019 reporting period. Accordingly, samples were collected and analyzed for Appendix III and Appendix IV constituents as required, including the annual evaluation of the full list of Appendix IV parameters. The results from the 2019 sampling events are summarized in Tables 1 and 2, covering Appendix III and Appendix IV, respectively. As shown in Table 2, none of the Appendix IV constituents from the 2019 sampling events were measured at concentrations representing a statistically significant level (SSL) above the corresponding site-specific groundwater protection standards. Detected concentrations of several Appendix IV constituents as well as Appendix III constituents; however, do remain above background, and thus providing the basis for continued Assessment Monitoring into 2020.

2.3 2019 Monitoring Program Transitions

No transitions were effected in 2019, as the Bottom Ash Ponds remained in the Assessment Monitoring Program.

2.4 2019 Corrective Actions

During 2019, there were no problems identified or corrective actions undertaken.

2.5 2020 Projected Activities

It is anticipated that Assessment Monitoring activities will continue for the Bottom Ash Ponds during 2020, with continued review of Appendix IV constituent concentrations and comparison against established groundwater protection standards. It is further anticipated that efforts in support of “closure by removal” will be initiated for the Bottom Ash Ponds, and when completed, will likely result in changes/termination of the CCR-related groundwater monitoring program.

3.0 Ash Disposal Site

3.1 Groundwater Monitoring Network

The CCR groundwater monitoring system for the Ash Disposal Site is comprised of four wells, including Well MW-24 (upgradient) and Wells MW-21, MW-22 and MW-25 (downgradient). All four wells are screened across the soil/bedrock interface, wherein the uppermost aquifer exists. The locations of the wells are shown on Figure 2, along with depiction of the generalized groundwater flow direction in the area of the disposal site. Each of these wells was already existing, and no new wells were added nor were any existing wells abandoned/replaced during the 2019 reporting period.

3.2 2019 Data Collection

Following its transition in early-2018, the Ash Disposal Site continued in the CCR Assessment Monitoring Program during the 2019 reporting period. Accordingly, samples were collected and analyzed for Appendix III and Appendix IV constituents as required, including the annual evaluation of the full list of Appendix IV parameters. The results from the 2019 sampling events are summarized in Tables 3 and 4, covering Appendix III and Appendix IV, respectively. As shown in Table 4, none of the Appendix IV constituents from the 2019 sampling events were measured at concentrations representing a statistically significant level (SSL) above the corresponding site-specific groundwater protection standards. Detected concentrations of several Appendix IV constituents as well as Appendix III constituents; however, do remain above background, and thus providing the basis for continued Assessment Monitoring into 2020.

3.3 2019 Monitoring Program Transitions

No transitions were effected in 2019, as the Ash Disposal Site remained in the Assessment Monitoring Program.

3.4 2019 Corrective Actions

During 2019, there were no problems identified or corrective actions undertaken.

3.5 2020 Projected Activities

It is anticipated that Assessment Monitoring activities will continue for the Ash Disposal Site during 2020, with continued review of Appendix IV constituent concentrations and comparison against established groundwater protection standards.

Tables

Table 1
Cheswick Generating Station
Bottom Ash Ponds--Groundwater Analytical Data
CCR Appendix III Constituents

Monitoring Well	Date Sampled	Groundwater Elevation (ft. MSL)	Total Boron (mg/L)	Total Calcium (mg/L)	Total Chloride (mg/L)	Total Fluoride (mg/L)	Total Dissolved Solids (mg/L)	Sulfate (mg/L)	pH (S.U.)
			Calculated Background						
			0.45	95.1	175	0.2	701	191	6.19-6.80
MW-8 (Upgradient)	28-Dec-15	769.52	0.25	83.7	138	0.2	536	118	6.49
	28-Jan-16	768.82	0.27	81.0	122	0.2	500	132	6.55
	5-May-16	768.54	0.32	87.8	129	0.2	596	157	6.54
	28-Jul-16	767.89	0.31	69.0	115	0.2	502	110	6.45
	19-Oct-16	768.40	0.27	85.5	149	0.2	604	112	6.42
	30-Jan-17	768.27	0.29	70.9	109	0.2	490	129	6.46
	13-Apr-17	769.07	0.34	78.2	87	0.2	464	145	6.67
	1-Aug-17	769.43	0.37	73.2	78	0.2	486	150	6.34
	5-Oct-17	768.01	0.37	73.4	94	0.1	464	130	6.45
	11-Jul-18	768.93	0.27	61.9	79	0.3	428	112	6.77
	16-Oct-18	768.93	0.28	54.8	74	0.3	406	112	6.70
	8-Apr-19	769.72	0.31	61.5	60	0.3	386	124	6.76
1-Aug-19	768.79	0.37	57.2	38	0.4	388	128	6.77	
7-Oct-19	769.52	0.20	52.8	17	0.2	218	47	6.87	
MW-9 (Downgradient)	28-Dec-15	757.75	0.26	86.7	167	0.1	554	112	6.56
	28-Jan-16	757.12	0.28	91.7	173	0.1	566	104	6.56
	5-May-16	756.96	0.23	91.4	189	0.1	646	103	6.68
	28-Jul-16	757.22	0.28	94.1	194	0.1	668	115	6.57
	19-Oct-16	756.98	0.25	99.8	173	0.1	732	110	6.52
	30-Jan-17	758.17	0.25	84.5	155	< 0.1	596	113	6.45
	13-Apr-17	757.82	0.26	89.4	141	< 0.1	548	107	5.59
	1-Aug-17	758.55	0.25	89.0	159	< 0.1	564	114	6.11
	5-Oct-17	756.95	0.29	113	238	< 0.1	776	150	6.45
	11-Jul-18	757.60	0.25	85.0	159	< 0.1	546	114	6.60
	16-Oct-18	757.70	0.26	74.9	144	0.1	540	117	6.36
	8-Apr-19	758.26	0.28	81.3	136	0.1	500	109	6.67
	1-Aug-19	757.41	0.29	77.0	128	0.1	488	111	6.74
	7-Oct-19	757.28	0.27	81.8	125	< 0.1	472	109	6.68
MW-10 (Downgradient)	28-Dec-15	760.57	0.30	119	280	0.2	822	127	6.83
	28-Jan-16	760.04	0.29	118	263	0.2	766	118	6.98
	5-May-16	759.95	0.28	114	267	0.1	790	110	6.97
	28-Jul-16	760.13	0.28	89.8	198	0.2	656	106	6.78
	19-Oct-16	759.99	0.30	127	246	0.2	862	107	6.67
	30-Jan-17	760.75	0.27	109	239	0.1	722	118	6.85
	13-Apr-17	760.63	0.28	110	228	< 0.1	738	113	6.62
	1-Aug-17	760.89	0.30	114	255	0.1	784	125	6.89
	5-Oct-17	759.82	0.32	109	270	< 0.1	798	136	6.78
	11-Jul-18	758.58	0.28	107	242	0.1	742	126	7.07
	16-Oct-18	760.48	0.32	97.7	237	0.1	744	127	7.09
	8-Apr-19	760.86	0.26	94.8	183	0.2	586	111	7.00
	1-Aug-19	759.49	0.32	93.7	208	0.1	670	119	7.10
7-Oct-19	760.31	0.33	110	195	0.2	616	122	7.01	
MW-11 (Downgradient)	28-Dec-15	764.35	0.19	79.3	35	0.5	346	68	7.06
	28-Jan-16	763.77	0.20	144	307	0.3	860	93	6.94
	5-May-16	764.00	0.22	112	209	0.4	694	93	6.88
	28-Jul-16	763.88	0.31	144	340	0.2	1070	144	6.71
	19-Oct-16	763.84	0.27	132	229	0.3	848	107	6.94
	30-Jan-17	764.29	0.18	84.1	106	0.5	450	77	6.95
	13-Apr-17	764.27	0.20	86.9	99	0.4	448	77	7.03
	1-Aug-17	764.23	0.26	98.1	110	0.5	498	80	6.75
	5-Oct-17	763.81	0.28	153	323	< 0.1	1130	162	6.60
	11-Jul-18	764.13	0.23	97.8	117	0.5	544	93	7.06
	16-Oct-18	764.11	0.23	82.7	71	0.6	452	79	6.80
	8-Apr-19	764.53	0.15	69.3	64	0.5	344	76	6.68
	1-Aug-19	763.61	0.21	75.4	61	0.5	356	67	6.99
	7-Oct-19	764.37	0.14	80.0	32	0.7	300	37	6.86
PZ-1 (Observation Well)	28-Dec-15	771.51	N/A	N/A	N/A	N/A	N/A	N/A	N/A
	28-Jan-16	769.09	N/A	N/A	N/A	N/A	N/A	N/A	N/A
	5-May-16	767.48	N/A	N/A	N/A	N/A	N/A	N/A	N/A
	28-Jul-16	762.50	N/A	N/A	N/A	N/A	N/A	N/A	N/A
	19-Oct-16	764.01	N/A	N/A	N/A	N/A	N/A	N/A	N/A
	30-Jan-17	771.35	N/A	N/A	N/A	N/A	N/A	N/A	N/A
	13-Apr-17	770.94	N/A	N/A	N/A	N/A	N/A	N/A	N/A
	1-Aug-17	774.22	N/A	N/A	N/A	N/A	N/A	N/A	N/A
	5-Oct-17	772.50	N/A	N/A	N/A	N/A	N/A	N/A	N/A
	11-Jul-18	771.05	N/A	N/A	N/A	N/A	N/A	N/A	N/A
	16-Oct-18	769.83	N/A	N/A	N/A	N/A	N/A	N/A	N/A
	8-Apr-19	770.30	N/A	N/A	N/A	N/A	N/A	N/A	N/A
	1-Aug-19	771.65	N/A	N/A	N/A	N/A	N/A	N/A	N/A
7-Oct-19	772.70	N/A	N/A	N/A	N/A	N/A	N/A	N/A	

N/A = Not applicable. Well only used for the collection of groundwater levels.

Notes:

- Cells with "<" are represented as non-detects. Values shown correspond to the laboratory reporting limit.
- Background values based on statistical evaluation of initial eight rounds (Dec. 2015 thru Aug. 2017) of groundwater sampling data for Well MW-8.

Table 2
Cheswick Generating Station
Bottom Ash Ponds--Groundwater Analytical Data
CCR Appendix IV Constituents

Monitoring Well	Date Sampled	Total Antimony (mg/L)	Total Arsenic (mg/L)	Total Barium (mg/L)	Total Beryllium (mg/L)	Total Cadmium (mg/L)	Total Chromium (mg/L)	Total Cobalt (mg/L)	Total Fluoride (mg/L)	Total Lead (mg/L)	Total Lithium (mg/L)	Total Mercury (mg/L)	Total Molybdenum (mg/L)	Total Selenium (mg/L)	Total Thallium (mg/L)	Total Radium-226 and 228 (pCi/L)
		Calculated Background														
		0.001	0.001	0.04	0.001	0.002	0.01	0.005	0.2	0.001	0.01	0.0002	0.02	0.018	0.0002	1.39
		Groundwater Protection Standard														
		MCL	MCL	MCL	MCL	MCL	MCL	RSL	MCL	RSL	RSL	MCL	RSL	MCL	RSL	MCL
		0.006	0.01	2	0.004	0.005	0.1	0.006	4.0	0.015	0.04	0.002	0.10	0.05	0.002	5
MW-8 (Upgradient)	28-Dec-15	< 0.001	< 0.001	0.04	< 0.001	< 0.002	< 0.01	< 0.005	0.2	< 0.001	< 0.01	< 0.0002	< 0.02	0.007	< 0.0002	0.62
	28-Jan-16	< 0.001	< 0.001	0.04	< 0.001	< 0.002	< 0.01	< 0.005	0.2	< 0.001	0.01	< 0.0002	< 0.02	0.013	< 0.0002	0.50
	5-May-16	< 0.001	< 0.001	0.04	< 0.001	< 0.002	< 0.01	< 0.005	0.2	< 0.001	< 0.01	< 0.0002	< 0.02	0.016	< 0.0002	0.80
	28-Jul-16	< 0.001	< 0.001	0.03	< 0.001	< 0.002	< 0.01	< 0.005	0.2	< 0.001	0.01	< 0.0002	< 0.02	0.009	< 0.0002	0.43
	19-Oct-16	< 0.001	< 0.001	0.04	< 0.001	< 0.002	< 0.01	< 0.005	0.2	< 0.001	0.01	< 0.0002	< 0.02	0.007	< 0.0002	0.77
	30-Jan-17	< 0.001	< 0.001	0.03	< 0.001	< 0.002	< 0.01	< 0.005	0.2	< 0.001	< 0.01	< 0.0002	< 0.02	0.013	< 0.0002	0.67
	13-Apr-17	< 0.001	< 0.001	0.03	< 0.001	< 0.002	< 0.01	< 0.005	0.2	< 0.001	< 0.01	< 0.0002	< 0.02	0.015	< 0.0002	0.40
	1-Aug-17	< 0.001	< 0.001	0.03	< 0.001	< 0.002	< 0.01	< 0.005	0.2	< 0.001	0.01	< 0.0002	< 0.02	0.013	< 0.0002	0.98
	3-Apr-18	< 0.001	0.002	0.02	< 0.001	< 0.002	< 0.01	< 0.005	0.3	< 0.001	< 0.01	< 0.0002	< 0.02	< 0.001	< 0.0002	1.47
	11-Jul-18	Not Analyzed	< 0.001	0.03	Not Analyzed	Not Analyzed	Not Analyzed	Not Analyzed	0.3	Not Analyzed	Not Analyzed	Not Analyzed	Not Analyzed	0.008	Not Analyzed	0.11
16-Oct-18	Not Analyzed	< 0.001	0.03	Not Analyzed	Not Analyzed	Not Analyzed	Not Analyzed	0.3	Not Analyzed	Not Analyzed	Not Analyzed	Not Analyzed	0.007	Not Analyzed	0.58	
MW-9 (Downgradient)	28-Dec-15	< 0.001	< 0.001	0.03	< 0.001	< 0.002	< 0.01	< 0.005	0.1	< 0.001	< 0.01	< 0.0002	< 0.02	< 0.001	< 0.0002	0.80
	28-Jan-16	< 0.001	< 0.001	0.03	< 0.001	< 0.002	< 0.01	< 0.005	0.1	< 0.001	< 0.01	< 0.0002	< 0.02	< 0.001	< 0.0002	0.15
	5-May-16	< 0.001	< 0.001	0.03	< 0.001	< 0.002	< 0.01	< 0.005	0.1	< 0.001	< 0.01	< 0.0002	< 0.02	< 0.001	< 0.0002	0.75
	28-Jul-16	< 0.001	< 0.001	0.03	< 0.001	< 0.002	< 0.01	< 0.005	0.1	< 0.001	< 0.01	< 0.0002	< 0.02	< 0.001	< 0.0002	0.18
	19-Oct-16	< 0.001	< 0.001	0.04	< 0.001	< 0.002	< 0.01	< 0.005	0.1	< 0.001	< 0.01	< 0.0002	< 0.02	< 0.001	< 0.0002	0.43
	30-Jan-17	< 0.001	< 0.001	0.03	< 0.001	< 0.002	< 0.01	< 0.005	< 0.1	< 0.001	< 0.01	< 0.0002	< 0.02	< 0.001	< 0.0002	-0.04
	13-Apr-17	< 0.001	< 0.001	0.03	< 0.001	< 0.002	< 0.01	< 0.005	< 0.1	< 0.001	< 0.01	< 0.0002	< 0.02	< 0.001	< 0.0002	-0.19
	1-Aug-17	< 0.001	< 0.001	0.03	< 0.001	< 0.002	< 0.01	< 0.005	< 0.1	< 0.001	< 0.01	< 0.0002	< 0.02	< 0.001	< 0.0002	0.31
	3-Apr-18	< 0.001	< 0.001	0.03	< 0.001	< 0.002	< 0.01	< 0.005	< 0.1	< 0.001	< 0.01	< 0.0002	< 0.02	< 0.001	< 0.0002	1.33
	11-Jul-18	Not Analyzed	< 0.001	0.03	Not Analyzed	Not Analyzed	Not Analyzed	Not Analyzed	< 0.1	Not Analyzed	Not Analyzed	Not Analyzed	Not Analyzed	< 0.001	Not Analyzed	-0.30
16-Oct-18	Not Analyzed	< 0.001	0.03	Not Analyzed	Not Analyzed	Not Analyzed	Not Analyzed	0.1	Not Analyzed	Not Analyzed	Not Analyzed	Not Analyzed	< 0.001	Not Analyzed	0.98	
MW-10 (Downgradient)	28-Dec-15	< 0.001	< 0.001	0.07	< 0.001	< 0.002	< 0.01	< 0.005	0.2	< 0.001	< 0.01	< 0.0002	< 0.02	< 0.001	< 0.0002	-0.04
	28-Jan-16	< 0.001	< 0.001	0.06	< 0.001	< 0.002	< 0.01	< 0.005	0.2	< 0.001	< 0.01	< 0.0002	< 0.02	< 0.001	< 0.0002	0.36
	5-May-16	< 0.001	< 0.001	0.05	< 0.001	< 0.002	< 0.01	< 0.005	0.1	< 0.001	< 0.01	< 0.0002	< 0.02	< 0.001	< 0.0002	0.53
	28-Jul-16	< 0.001	< 0.001	0.05	< 0.001	< 0.002	< 0.01	< 0.005	0.2	< 0.001	< 0.01	< 0.0002	< 0.02	< 0.001	< 0.0002	0.13
	19-Oct-16	< 0.001	< 0.001	0.10	< 0.001	< 0.002	< 0.01	< 0.005	0.2	< 0.001	< 0.01	< 0.0002	< 0.02	< 0.001	< 0.0002	0.64
	30-Jan-17	< 0.001	< 0.001	0.05	< 0.001	< 0.002	< 0.01	< 0.005	0.1	< 0.001	< 0.01	< 0.0002	< 0.02	< 0.001	< 0.0002	-0.15
	13-Apr-17	< 0.001	< 0.001	0.04	< 0.001	< 0.002	< 0.01	< 0.005	< 0.1	< 0.001	< 0.01	< 0.0002	< 0.02	< 0.001	< 0.0002	0.52
	1-Aug-17	< 0.001	< 0.001	0.05	< 0.001	< 0.002	< 0.01	< 0.005	0.1	< 0.001	< 0.01	< 0.0002	< 0.02	< 0.001	< 0.0002	1.12
	3-Apr-18	< 0.001	< 0.001	0.04	< 0.001	< 0.002	< 0.01	< 0.005	0.1	< 0.001	< 0.01	< 0.0002	< 0.02	< 0.001	< 0.0002	0.13
	11-Jul-18	Not Analyzed	< 0.001	0.04	Not Analyzed	Not Analyzed	Not Analyzed	Not Analyzed	0.1	Not Analyzed	Not Analyzed	Not Analyzed	Not Analyzed	< 0.001	Not Analyzed	0.86
16-Oct-18	Not Analyzed	< 0.001	0.04	Not Analyzed	Not Analyzed	Not Analyzed	Not Analyzed	0.1	Not Analyzed	Not Analyzed	Not Analyzed	Not Analyzed	< 0.001	Not Analyzed	1.11	
8-Apr-19	< 0.001	< 0.001	0.04	< 0.001	< 0.002	< 0.01	< 0.005	0.2	< 0.001	< 0.01	< 0.0002	< 0.02	< 0.001	< 0.0002	0.95	
1-Aug-19	Not Analyzed	Not Analyzed	0.03	Not Analyzed	Not Analyzed	Not Analyzed	Not Analyzed	0.1	Not Analyzed	Not Analyzed	Not Analyzed	Not Analyzed	< 0.001	Not Analyzed	0.79	
7-Oct-19	Not Analyzed	Not Analyzed	0.04	Not Analyzed	Not Analyzed	Not Analyzed	Not Analyzed	0.2	Not Analyzed	Not Analyzed	Not Analyzed	Not Analyzed	< 0.001	Not Analyzed	0.63	

**Table 2
Cheswick Generating Station
Bottom Ash Ponds--Groundwater Analytical Data
CCR Appendix IV Constituents**

Monitoring Well	Date Sampled	Total Antimony (mg/L)	Total Arsenic (mg/L)	Total Barium (mg/L)	Total Beryllium (mg/L)	Total Cadmium (mg/L)	Total Chromium (mg/L)	Total Cobalt (mg/L)	Total Fluoride (mg/L)	Total Lead (mg/L)	Total Lithium (mg/L)	Total Mercury (mg/L)	Total Molybdenum (mg/L)	Total Selenium (mg/L)	Total Thallium (mg/L)	Total Radium-226 and 228 (pCi/L)	
		Calculated Background															
		0.001	0.001	0.04	0.001	0.002	0.01	0.005	0.2	0.001	0.01	0.0002	0.02	0.018	0.0002	1.39	
		Groundwater Protection Standard															
		MCL	MCL	MCL	MCL	MCL	MCL	RSL	MCL	RSL	RSL	MCL	RSL	MCL	MCL	MCL	
		0.006	0.01	2	0.004	0.005	0.1	0.006	4.0	0.015	0.04	0.002	0.10	0.05	0.002	5	
MW-11 (Downgradient)	28-Dec-15	< 0.001	< 0.001	0.05	< 0.001	< 0.002	< 0.01	< 0.005	0.5	< 0.001	< 0.01	< 0.0002	< 0.02	0.004	< 0.0002	0.05	
	28-Jan-16	< 0.001	< 0.001	0.10	< 0.001	< 0.002	< 0.01	< 0.005	0.3	< 0.001	< 0.01	< 0.0002	< 0.02	0.002	< 0.0002	0.50	
	5-May-16	< 0.001	< 0.001	0.08	< 0.001	< 0.002	< 0.01	< 0.005	0.4	< 0.001	< 0.01	< 0.0002	< 0.02	0.002	< 0.0002	0.44	
	28-Jul-16	< 0.001	< 0.001	0.12	< 0.001	< 0.002	< 0.01	< 0.005	0.2	< 0.001	0.01	< 0.0002	< 0.02	< 0.001	< 0.0002	1.24	
	19-Oct-16	< 0.001	0.001	0.13	< 0.001	< 0.002	< 0.01	< 0.005	0.3	< 0.001	0.01	< 0.0002	< 0.02	< 0.001	< 0.0002	0.82	
	30-Jan-17	< 0.001	< 0.001	0.07	< 0.001	< 0.002	< 0.01	< 0.005	0.5	< 0.001	< 0.01	< 0.0002	< 0.02	0.003	< 0.0002	0.23	
	13-Apr-17	< 0.001	< 0.001	0.08	< 0.001	< 0.002	< 0.01	< 0.005	0.4	< 0.001	< 0.01	< 0.0002	< 0.02	0.002	< 0.0002	0.94	
	1-Aug-17	< 0.001	< 0.001	0.10	< 0.001	< 0.002	< 0.01	< 0.005	0.5	< 0.001	< 0.01	< 0.0002	< 0.02	0.001	< 0.0002	0.89	
	3-Apr-18	< 0.001	< 0.001	0.07	< 0.001	< 0.002	< 0.01	< 0.005	0.9	< 0.001	< 0.01	< 0.0002	< 0.02	0.002	< 0.0002	0.40	
	11-Jul-18	Not Analyzed	< 0.001	0.11	Not Analyzed	Not Analyzed	Not Analyzed	Not Analyzed	Not Analyzed	0.5	Not Analyzed	Not Analyzed	Not Analyzed	Not Analyzed	0.001	Not Analyzed	0.53
	16-Oct-18	Not Analyzed	< 0.001	0.10	Not Analyzed	Not Analyzed	Not Analyzed	Not Analyzed	Not Analyzed	0.6	Not Analyzed	Not Analyzed	Not Analyzed	Not Analyzed	0.001	Not Analyzed	1.01
	8-Apr-19	< 0.001	< 0.001	0.08	< 0.001	< 0.002	< 0.01	< 0.005	0.5	< 0.001	< 0.01	< 0.0002	< 0.02	0.003	< 0.0002	0.55	
1-Aug-19	Not Analyzed	Not Analyzed	0.08	Not Analyzed	Not Analyzed	Not Analyzed	Not Analyzed	Not Analyzed	0.5	Not Analyzed	Not Analyzed	Not Analyzed	Not Analyzed	0.001	Not Analyzed	1.25	
7-Oct-19	Not Analyzed	Not Analyzed	0.13	Not Analyzed	Not Analyzed	Not Analyzed	Not Analyzed	Not Analyzed	0.7	Not Analyzed	Not Analyzed	Not Analyzed	Not Analyzed	0.003	Not Analyzed	0.45	

Notes:

1. Cells with "<" are represented as non-detects. Values shown correspond to the laboratory reporting limit.
2. Background values based on statistical evaluation of initial eight rounds (Dec. 2015 thru Aug. 2017) of groundwater sampling data for Well MW-8.
3. As indicated, Groundwater Protection Standards are either published MCLs or risk-based Regional Screening Levels (RSLs). For constituents where calculated background exceeds either the MCL or RSL, the background value is used.

Table 3
Cheswick Generating Station
Ash Disposal Site--Groundwater Analytical Data
CCR Appendix III Constituents

Monitoring Well	Date Sampled	Groundwater Elevation (ft. MSL)	Total Boron (mg/L)	Total Calcium (mg/L)	Total Chloride (mg/L)	Total Fluoride (mg/L)	Total Dissolved Solids (mg/L)	Sulfate (mg/L)	pH (S.U.)
			Calculated Background						
			0.05	141	137	0.1	738	69	6.21-6.98
MW-24 (Upgradient)	14-Oct-16	1075.54	< 0.05	126	85	< 0.1	534	58	6.53
	8-Dec-16	1077.22	< 0.05	125	83	< 0.1	478	52	6.38
	9-Jan-17	1077.24	< 0.05	126	90	< 0.1	738	59	6.57
	15-Feb-17	1078.30	< 0.05	134	60	< 0.1	516	52	6.65
	6-Mar-17	1077.65	< 0.05	125	61	< 0.1	496	48	6.52
	24-Apr-17	1077.71	< 0.05	127	51	< 0.1	516	46	6.62
	26-Jun-17	1077.59	< 0.05	118	49	< 0.1	522	45	6.82
	27-Jul-17	1077.21	< 0.05	116	57	< 0.1	544	49	6.59
	6-Oct-17	1073.21	< 0.05	122	47	< 0.1	508	47	6.61
	10-Jul-18	1077.46	< 0.05	125	24	0.1	514	46	6.68
	17-Oct-18	1077.33	< 0.05	119	31	< 0.1	522	37	6.92
	9-Apr-19	1076.98	< 0.05	128	16	0.1	482	29	6.89
8-Aug-19	1077.07	< 0.05	133	15	0.1	482	31	6.91	
8-Oct-19	1076.97	< 0.05	119	21	0.1	474	33	7.01	
MW-21 (Downgradient)	28-Dec-15	869.60	< 0.05	56.3	3	0.2	294	56	6.78
	9-Mar-16	866.25	0.06	61.3	2	0.2	278	55	7.92
	7-Jun-16	865.23	0.07	57.8	2	0.2	272	56	7.10
	9-Sep-16	865.35	< 0.05	59.3	2	0.2	296	48	7.16
	8-Dec-16	865.55	0.09	61.2	3	0.1	288	51	7.13
	16-Feb-17	867.05	0.07	62.1	3	0.2	272	53	7.17
	20-Apr-17	864.95	< 0.05	60.5	3	0.2	330	56	7.44
	26-Jun-17	864.23	< 0.05	57.9	3	0.1	296	60	7.42
	26-Jul-17	864.01	< 0.05	60.5	3	0.2	282	55	7.30
	6-Oct-17	863.37	< 0.05	60.4	3	0.2	274	53	6.80
	10-Jul-18	864.48	< 0.05	61.2	3	0.2	298	57	7.18
	17-Oct-18	865.19	< 0.05	65.7	3	0.2	300	57	7.67
9-Apr-19	865.37	< 0.05	63.2	3	0.2	258	65	7.50	
7-Aug-19	865.33	< 0.05	65.7	2	0.2	284	63	7.47	
8-Oct-19	865.14	< 0.05	63.4	3	0.2	290	59	7.64	
MW-22 (Downgradient)	28-Dec-15	869.37	< 0.05	111	5	0.1	664	199	6.72
	9-Mar-16	865.46	0.07	95.2	4	0.1	506	148	7.14
	7-Jun-16	865.24	0.08	87.1	4	< 0.1	516	144	6.73
	9-Sep-16	864.88	< 0.05	86.8	5	0.4	600	146	6.28
	8-Dec-16	865.18	0.09	103	6	0.1	638	172	6.83
	16-Feb-17	865.85	0.16	96.3	8	0.1	616	183	6.86
	19-Apr-17	864.30	0.08	95.8	7	< 0.1	628	191	6.91
	26-Jun-17	864.01	0.07	89.6	7	< 0.1	622	186	7.15
	26-Jul-17	863.82	0.07	85.0	6	0.1	578	175	6.94
	6-Oct-17	863.52	0.05	86.1	7	0.1	594	169	6.62
	10-Jul-18	864.66	0.08	83.9	6	0.1	598	159	7.00
	17-Oct-18	865.32	0.10	88.6	7	0.2	646	182	7.10
9-Apr-19	864.69	0.08	101	7	0.1	626	200	7.12	
7-Aug-19	864.61	0.08	112	6	< 0.1	692	233	6.97	
8-Oct-19	864.81	0.08	98	7	0.1	686	208	7.14	
MW-25 (Downgradient)	14-Oct-16	864.82	1.03	155	67	< 0.1	878	324	6.95
	8-Dec-16	865.17	1.51	128	27	< 0.1	670	268	6.86
	9-Jan-17	864.15	1.90	118	29	0.2	676	241	6.97
	16-Feb-17	866.37	4.11	199	65	0.1	916	420	7.16
	6-Mar-17	865.44	4.91	214	83	< 0.1	1080	469	6.97
	19-Apr-17	864.04	2.88	173	60	< 0.1	954	374	7.18
	26-Jun-17	863.79	2.48	134	27	< 0.1	702	242	7.13
	26-Jul-17	863.61	3.97	148	34	< 0.1	706	261	6.69
	6-Oct-17	863.11	3.63	158	48	< 0.1	802	236	6.60
	10-Jul-18	864.02	2.15	139	34	< 0.1	642	204	6.78
	17-Oct-18	864.59	< 0.05	122	31	0.1	508	38	7.22
	9-Apr-19	864.38	0.81	94.3	2	0.1	380	112	7.25
7-Aug-19	864.29	1.36	116	23	< 0.1	500	155	7.11	
8-Oct-19	863.84	1.38	114	49	< 0.1	714	270	7.18	

Notes:

- Cells with "<" are represented as non-detects. Values shown correspond to the laboratory reporting limit.
- Background values based on statistical evaluation of initial eight rounds (Oct. 2016 thru July 2017) of groundwater sampling data for Well MW-24.

Table 4
Cheswick Generating Station
Ash Disposal Site--Groundwater Analytical Data
CCR Appendix IV Constituents

Monitoring Well	Date Sampled	Total Antimony (mg/L)	Total Arsenic (mg/L)	Total Barium (mg/L)	Total Beryllium (mg/L)	Total Cadmium (mg/L)	Total Chromium (mg/L)	Total Cobalt (mg/L)	Total Fluoride (mg/L)	Total Lead (mg/L)	Total Lithium (mg/L)	Total Mercury (mg/L)	Total Molybdenum (mg/L)	Total Selenium (mg/L)	Total Thallium (mg/L)	Total Radium-226 and 228 (pCi/L)
		Calculated Background														
		0.001	0.001	0.14	0.001	0.002	0.01	0.005	0.1	0.001	0.01	0.0002	0.02	0.001	0.0002	12.9
		Groundwater Protection Standard														
		MCL	MCL	MCL	MCL	MCL	MCL	RSL	MCL	RSL	RSL	MCL	RSL	MCL	MCL	BACKGROUND
MW-24 (Upgradient)	14-Oct-16	< 0.001	< 0.001	0.12	< 0.001	< 0.002	< 0.01	< 0.005	< 0.1	< 0.001	< 0.01	< 0.0002	< 0.02	< 0.001	< 0.0002	0.22
	8-Dec-16	< 0.001	< 0.001	0.12	< 0.001	< 0.002	< 0.01	< 0.005	< 0.1	< 0.001	< 0.01	< 0.0002	< 0.02	< 0.001	< 0.0002	-0.08
	9-Jan-17	< 0.001	< 0.001	0.12	< 0.001	< 0.002	< 0.01	< 0.005	< 0.1	< 0.001	< 0.01	< 0.0002	< 0.02	< 0.001	< 0.0002	0.03
	15-Feb-17	< 0.001	< 0.001	0.13	< 0.001	< 0.002	< 0.01	< 0.005	< 0.1	< 0.001	< 0.01	< 0.0002	< 0.02	< 0.001	< 0.0002	0.37
	6-Mar-17	< 0.001	< 0.001	0.12	< 0.001	< 0.002	< 0.01	< 0.005	< 0.1	< 0.001	< 0.01	< 0.0002	< 0.02	< 0.001	< 0.0002	0.28
	24-Apr-17	< 0.001	< 0.001	0.13	< 0.001	< 0.002	< 0.01	< 0.005	< 0.1	< 0.001	< 0.01	< 0.0002	< 0.02	< 0.001	< 0.0002	-0.31
	26-Jun-17	< 0.001	< 0.001	0.11	< 0.001	< 0.002	< 0.01	< 0.005	< 0.1	< 0.001	< 0.01	< 0.0002	< 0.02	< 0.001	< 0.0002	0.40
	27-Jul-17	< 0.001	< 0.001	0.11	< 0.001	< 0.002	< 0.01	< 0.005	< 0.1	< 0.001	< 0.01	< 0.0002	< 0.02	< 0.001	< 0.0002	1.71
	4-Apr-18	< 0.001	0.001	0.13	< 0.001	< 0.002	< 0.01	< 0.005	< 0.1	< 0.001	< 0.01	< 0.0002	< 0.02	< 0.001	< 0.0002	0.25
	10-Jul-18	Not Analyzed	0.001	0.13	Not Analyzed	Not Analyzed	Not Analyzed	Not Analyzed	0.1	Not Analyzed	Not Analyzed	Not Analyzed	Not Analyzed	< 0.001	Not Analyzed	0.53
	17-Oct-18	Not Analyzed	< 0.001	0.06	Not Analyzed	Not Analyzed	Not Analyzed	Not Analyzed	< 0.1	Not Analyzed	Not Analyzed	Not Analyzed	Not Analyzed	< 0.001	Not Analyzed	0.86
	9-Apr-19	< 0.001	0.001	0.13	< 0.001	< 0.002	< 0.01	< 0.005	0.1	< 0.001	< 0.01	< 0.0002	< 0.02	< 0.001	< 0.0002	0.62
8-Aug-19	Not Analyzed	0.001	0.14	Not Analyzed	Not Analyzed	Not Analyzed	Not Analyzed	0.1	Not Analyzed	Not Analyzed	Not Analyzed	Not Analyzed	< 0.001	Not Analyzed	0.90	
8-Oct-19	Not Analyzed	0.001	0.13	Not Analyzed	Not Analyzed	Not Analyzed	Not Analyzed	0.1	Not Analyzed	Not Analyzed	Not Analyzed	Not Analyzed	< 0.001	Not Analyzed	0.40	
MW-21 (Downgradient)	28-Dec-15	< 0.001	< 0.001	0.06	< 0.001	< 0.002	< 0.01	< 0.005	0.2	< 0.001	< 0.01	< 0.0002	< 0.02	0.002	< 0.0002	0.21
	9-Mar-16	< 0.001	< 0.001	0.06	< 0.001	< 0.002	< 0.01	< 0.005	0.2	< 0.001	< 0.01	< 0.0002	< 0.02	0.003	< 0.0002	-0.25
	7-Jun-16	< 0.001	< 0.001	0.05	< 0.001	< 0.002	< 0.01	< 0.005	0.2	< 0.001	< 0.01	< 0.0002	< 0.02	0.002	< 0.0002	0.56
	9-Sep-16	< 0.001	< 0.001	0.06	< 0.001	< 0.002	< 0.01	< 0.005	0.2	< 0.001	< 0.01	< 0.0002	< 0.02	0.002	< 0.0002	0.40
	8-Dec-16	< 0.001	< 0.001	0.06	< 0.001	< 0.002	< 0.01	< 0.005	0.1	< 0.001	< 0.01	< 0.0002	< 0.02	0.003	< 0.0002	-0.04
	16-Feb-17	< 0.001	< 0.001	0.06	< 0.001	< 0.002	< 0.01	< 0.005	0.2	< 0.001	< 0.01	< 0.0002	< 0.02	0.003	< 0.0002	0.35
	20-Apr-17	< 0.001	< 0.001	0.06	< 0.001	< 0.002	< 0.01	< 0.005	0.2	< 0.001	< 0.01	< 0.0002	< 0.02	0.002	< 0.0002	0.37
	26-Jun-17	< 0.001	< 0.001	0.05	< 0.001	< 0.002	< 0.01	< 0.005	0.1	< 0.001	< 0.01	< 0.0002	< 0.02	0.002	< 0.0002	0.91
	26-Jul-17	< 0.001	< 0.001	0.06	< 0.001	< 0.002	< 0.01	< 0.005	0.2	< 0.001	< 0.01	< 0.0002	< 0.02	0.002	< 0.0002	0.74
	4-Apr-18	< 0.001	< 0.001	0.05	< 0.001	< 0.002	< 0.01	< 0.005	0.2	< 0.001	< 0.01	< 0.0002	< 0.02	0.003	< 0.0002	0.46
	10-Jul-18	Not Analyzed	< 0.001	0.05	Not Analyzed	Not Analyzed	Not Analyzed	Not Analyzed	0.2	Not Analyzed	Not Analyzed	Not Analyzed	Not Analyzed	0.003	Not Analyzed	-0.41
	17-Oct-18	Not Analyzed	< 0.001	0.06	Not Analyzed	Not Analyzed	Not Analyzed	Not Analyzed	0.2	Not Analyzed	Not Analyzed	Not Analyzed	Not Analyzed	0.002	Not Analyzed	1.77
	9-Apr-19	< 0.001	< 0.001	0.06	< 0.001	< 0.002	< 0.01	< 0.005	0.2	< 0.001	< 0.01	< 0.0002	< 0.02	0.002	< 0.0002	0.93
7-Aug-19	Not Analyzed	< 0.001	0.06	Not Analyzed	Not Analyzed	Not Analyzed	Not Analyzed	0.2	Not Analyzed	Not Analyzed	Not Analyzed	Not Analyzed	0.001	Not Analyzed	1.75	
8-Oct-19	Not Analyzed	< 0.001	0.06	Not Analyzed	Not Analyzed	Not Analyzed	Not Analyzed	0.2	Not Analyzed	Not Analyzed	Not Analyzed	Not Analyzed	0.002	Not Analyzed	0.60	

Table 4
Cheswick Generating Station
Ash Disposal Site--Groundwater Analytical Data
CCR Appendix IV Constituents

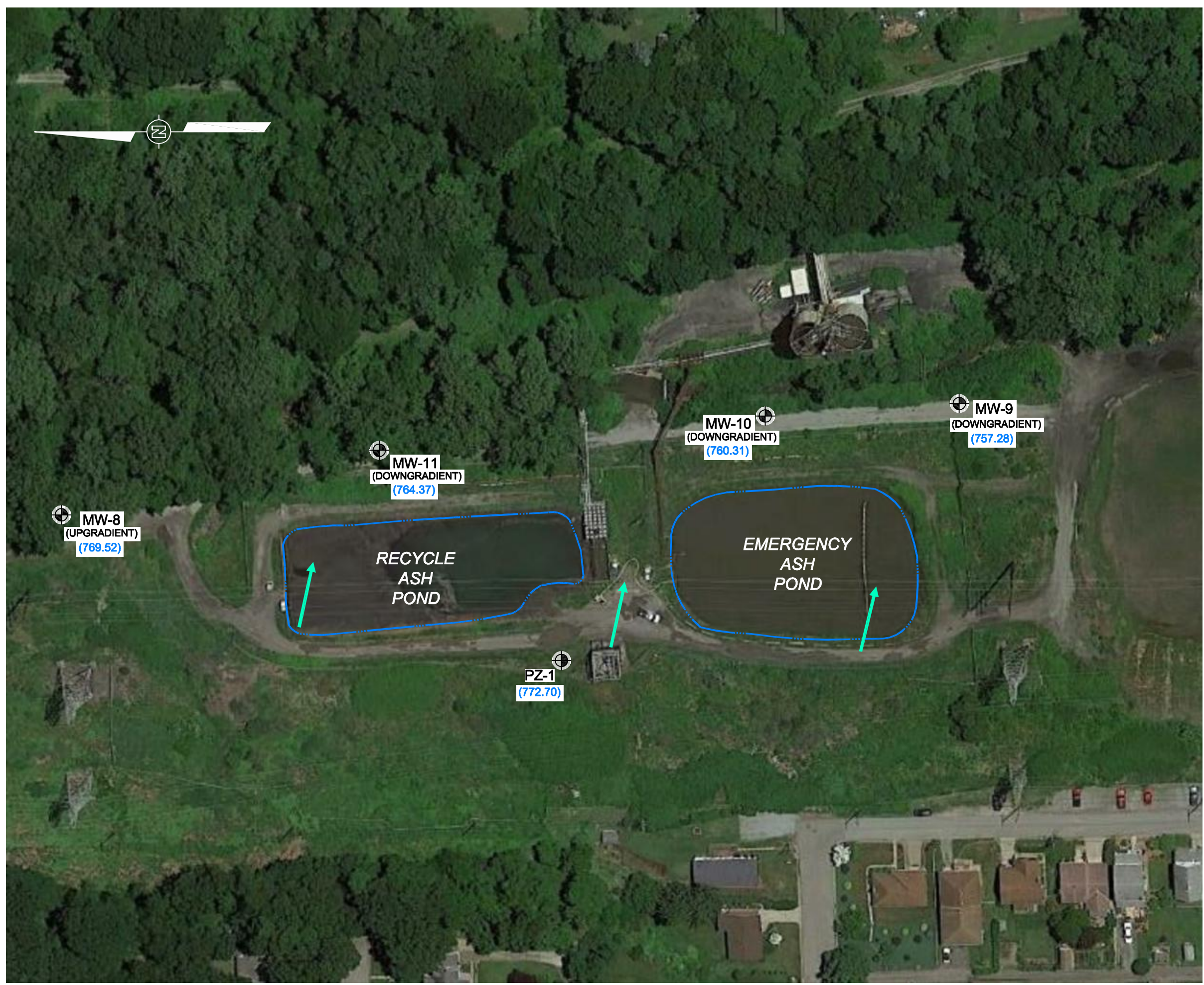
Monitoring Well	Date Sampled	Total Antimony (mg/L)	Total Arsenic (mg/L)	Total Barium (mg/L)	Total Beryllium (mg/L)	Total Cadmium (mg/L)	Total Chromium (mg/L)	Total Cobalt (mg/L)	Total Fluoride (mg/L)	Total Lead (mg/L)	Total Lithium (mg/L)	Total Mercury (mg/L)	Total Molybdenum (mg/L)	Total Selenium (mg/L)	Total Thallium (mg/L)	Total Radium-226 and 228 (pCi/L)
		Calculated Background														
		0.001	0.001	0.14	0.001	0.002	0.01	0.005	0.1	0.001	0.01	0.0002	0.02	0.001	0.0002	12.9
		Groundwater Protection Standard														
		MCL	MCL	MCL	MCL	MCL	MCL	RSL	MCL	RSL	RSL	MCL	RSL	MCL	MCL	BACKGROUND
0.006	0.01	2	0.004	0.005	0.1	0.006	4.0	0.015	0.04	0.002	0.10	0.05	0.002	12.9		
MW-22 (Downgradient)	28-Dec-15	< 0.001	< 0.001	0.04	< 0.001	< 0.002	< 0.01	< 0.005	0.1	< 0.001	0.01	< 0.0002	< 0.02	0.002	< 0.0002	1.46
	9-Mar-16	< 0.001	< 0.001	0.03	< 0.001	< 0.002	< 0.01	< 0.005	0.1	< 0.001	< 0.01	< 0.0002	< 0.02	0.002	< 0.0002	0.54
	7-Jun-16	< 0.001	< 0.001	0.03	< 0.001	< 0.002	< 0.01	< 0.005	< 0.1	< 0.001	< 0.01	< 0.0002	< 0.02	0.002	< 0.0002	0.31
	9-Sep-16	< 0.001	< 0.001	0.03	< 0.001	< 0.002	< 0.01	< 0.005	0.4	< 0.001	< 0.01	< 0.0002	< 0.02	0.003	< 0.0002	0.88
	8-Dec-16	< 0.001	0.003	0.07	< 0.001	< 0.002	< 0.01	< 0.005	0.1	0.006	0.01	< 0.0002	< 0.02	0.004	< 0.0002	0.14
	16-Feb-17	< 0.001	< 0.001	0.03	< 0.001	< 0.002	< 0.01	< 0.005	0.1	< 0.001	0.01	< 0.0002	< 0.02	0.004	< 0.0002	0.60
	19-Apr-17	< 0.001	< 0.001	0.03	< 0.001	< 0.002	< 0.01	< 0.005	< 0.1	< 0.001	< 0.01	< 0.0002	< 0.02	0.004	< 0.0002	0.31
	26-Jun-17	< 0.001	< 0.001	0.03	< 0.001	< 0.002	< 0.01	< 0.005	< 0.1	< 0.001	< 0.01	< 0.0002	< 0.02	0.004	< 0.0002	0.73
	26-Jul-17	< 0.001	< 0.001	0.03	< 0.001	< 0.002	< 0.01	< 0.005	0.1	< 0.001	< 0.01	< 0.0002	< 0.02	0.004	< 0.0002	0.79
	4-Apr-18	< 0.001	< 0.001	0.03	< 0.001	< 0.002	< 0.01	< 0.005	0.1	< 0.001	< 0.01	< 0.0002	< 0.02	0.003	< 0.0002	0.55
	10-Jul-18	Not Analyzed	< 0.001	0.02	Not Analyzed	Not Analyzed	Not Analyzed	Not Analyzed	0.1	Not Analyzed	Not Analyzed	Not Analyzed	Not Analyzed	0.005	Not Analyzed	2.26
	17-Oct-18	Not Analyzed	< 0.001	0.04	Not Analyzed	Not Analyzed	Not Analyzed	Not Analyzed	0.2	Not Analyzed	Not Analyzed	Not Analyzed	Not Analyzed	0.004	Not Analyzed	2.21
	9-Apr-19	< 0.001	< 0.001	0.03	< 0.001	< 0.002	< 0.01	< 0.005	0.1	< 0.001	< 0.01	< 0.0002	< 0.02	0.004	< 0.0002	1.42
7-Aug-19	Not Analyzed	< 0.001	0.04	Not Analyzed	Not Analyzed	Not Analyzed	Not Analyzed	< 0.1	Not Analyzed	Not Analyzed	Not Analyzed	Not Analyzed	0.004	Not Analyzed	1.16	
8-Oct-19	Not Analyzed	< 0.001	0.03	Not Analyzed	Not Analyzed	Not Analyzed	Not Analyzed	0.1	Not Analyzed	Not Analyzed	Not Analyzed	Not Analyzed	0.004	Not Analyzed	0.18	
MW-25 (Downgradient)	14-Oct-16	< 0.001	< 0.001	0.06	< 0.001	< 0.002	< 0.01	< 0.005	< 0.1	< 0.001	0.02	< 0.0002	< 0.02	0.002	< 0.0002	0.55
	8-Dec-16	< 0.001	0.002	0.04	< 0.001	< 0.002	< 0.01	< 0.005	< 0.1	< 0.001	0.03	< 0.0002	< 0.02	< 0.001	< 0.0002	0.35
	9-Jan-17	< 0.001	< 0.001	0.05	< 0.001	< 0.002	< 0.01	< 0.005	0.2	< 0.001	0.03	< 0.0002	< 0.02	< 0.001	< 0.0002	1.00
	16-Feb-17	< 0.001	< 0.001	0.09	< 0.001	< 0.002	< 0.01	< 0.005	0.1	< 0.001	0.13	< 0.0002	0.27	0.006	< 0.0002	0.86
	6-Mar-17	< 0.001	< 0.001	0.08	< 0.001	< 0.002	< 0.01	< 0.005	< 0.1	< 0.001	0.14	< 0.0002	0.29	0.007	< 0.0002	-0.19
	19-Apr-17	< 0.001	< 0.001	0.04	< 0.001	< 0.002	< 0.01	< 0.005	< 0.1	< 0.001	0.04	< 0.0002	< 0.02	0.001	< 0.0002	0.76
	26-Jun-17	< 0.001	< 0.001	0.04	< 0.001	< 0.002	< 0.01	< 0.005	< 0.1	< 0.001	0.03	< 0.0002	< 0.02	< 0.001	< 0.0002	0.71
	26-Jul-17	< 0.001	< 0.001	0.03	< 0.001	< 0.002	< 0.01	< 0.005	< 0.1	< 0.001	0.04	< 0.0002	< 0.02	0.001	< 0.0002	0.33
	4-Apr-18	< 0.001	< 0.001	0.03	< 0.001	< 0.002	< 0.01	< 0.005	0.3	< 0.001	< 0.01	< 0.0002	< 0.02	< 0.001	< 0.0002	0.54
	10-Jul-18	Not Analyzed	< 0.001	0.04	Not Analyzed	Not Analyzed	Not Analyzed	Not Analyzed	< 0.1	Not Analyzed	Not Analyzed	Not Analyzed	Not Analyzed	< 0.001	Not Analyzed	1.31
	17-Oct-18	Not Analyzed	0.001	0.13	Not Analyzed	Not Analyzed	Not Analyzed	Not Analyzed	0.1	Not Analyzed	Not Analyzed	Not Analyzed	Not Analyzed	< 0.001	Not Analyzed	0.96
	9-Apr-19	< 0.001	< 0.001	0.05	< 0.001	< 0.002	< 0.01	< 0.005	0.1	< 0.001	0.01	< 0.0002	< 0.02	< 0.001	< 0.0002	1.29
	7-Aug-19	Not Analyzed	< 0.001	0.07	Not Analyzed	Not Analyzed	Not Analyzed	Not Analyzed	< 0.1	Not Analyzed	Not Analyzed	Not Analyzed	Not Analyzed	< 0.001	Not Analyzed	0.85
8-Oct-19	Not Analyzed	< 0.001	0.05	Not Analyzed	Not Analyzed	Not Analyzed	Not Analyzed	< 0.1	Not Analyzed	Not Analyzed	Not Analyzed	Not Analyzed	< 0.001	Not Analyzed	0.61	

- Notes:
- Cells with "<" are represented as non-detects. Values shown correspond to the laboratory reporting limit.
 - Background values based on statistical evaluation of initial eight rounds (Oct. 2016 thru July 2017) of groundwater sampling data for Well MW-24.
 - As indicated, Groundwater Protection Standards are either published MCLs or risk-based Regional Screening Levels (RSLs). For constituents where calculated background exceeds either the MCL or RSL, the background value is used.

Figures

File: O:\PROJECT\631011035_Cheswick\631011035-B1.dwg Xref: Image
 Plot Date/Time: Jan 02, 2020 - 10:19am
 Plotted By: Greg Jones

OFFICE	DATE	DESIGNED BY	DRAWN BY	CHECKED BY	APPROVED BY	DRAWING NUMBER
Pittsburgh, PA	1/2/20	--	E. Schlegel	--	--	631011035-B1



- LEGEND:**
- MW-10 CCR GROUNDWATER MONITORING WELL WITH GROUNDWATER ELEVATION MEASURED ON OCTOBER 7, 2019 (760.31)
 - PZ-1 OBSERVATION WELL (GROUNDWATER LEVELS ONLY) WITH GROUNDWATER ELEVATION MEASURED ON OCTOBER 7, 2019 (772.70)
 - GROUNDWATER FLOW DIRECTION



REFERENCE:
 GOOGLE AERIAL PHOTOGRAPH, DATED 6/14/2014.

	500 Penn Center Boulevard, Suite 1000 Pittsburgh, Pennsylvania 15235
--	--

FIGURE 1
 CCR COMPLIANCE GROUNDWATER MONITORING WELL LOCATION MAP
 BOTTOM ASH PONDS
 CHESWICK GENERATING STATION
 SPRINGDALE, ALLEGHENY COUNTY, PENNSYLVANIA

OFFICE	DATE	DESIGNED BY	DRAWN BY	CHECKED BY	APPROVED BY	DRAWING NUMBER
Pittsburgh, PA	1/2/20	--	E. Schlegel	--	--	631011035-B2

File: O:\PROJECT\631011035_Cheswick\631011035-B2.dwg
 Plot Date/Time: Jan 02, 2020 - 10:17am
 Xref: Image
 Plotted By: Greg Jones



LEGEND:

MW-25 (863.84) CCR GROUNDWATER MONITORING WELL WITH GROUNDWATER ELEVATION MEASURED ON OCTOBER 8, 2019
 GROUNDWATER FLOW DIRECTION



REFERENCES:

1. GOOGLE AERIAL PHOTOGRAPH, DATED 6/14/2014.

	500 Penn Center Boulevard, Suite 1000 Pittsburgh, Pennsylvania 15235

FIGURE 2
 CCR COMPLIANCE GROUNDWATER MONITORING WELL LOCATION MAP
 CHESWICK ASH DISPOSAL SITE
 CHESWICK GENERATING STATION
 SPRINGDALE, ALLEGHENY COUNTY, PENNSYLVANIA